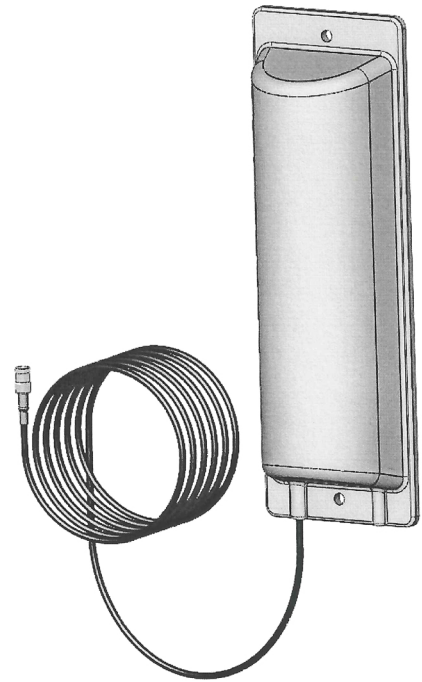


## Part Number: 1102-5

Element type	PIFA
Frequency	420 – 450 MHz
VSWR*	<2:1
Gain*	0 dB
Maximum Power	5 W
Polarization	Vertical
Size LxWxH	223x74x39 mm
Weight	2,2 kg
Coaxial Cable**	RG174
Cable Lenght**	5 m
Connector**	SMB - female
Cover Material	ABS
Cover Color	Grey



\* Typical values.

\*\* Other connectors and cables on demand.

The antenna is omni-directional in free space, but the characteristics of the radiation changes with the kind of basis that the antenna is mounted on. (ie If the antenna is mounted on a metal wall it will radiate 180 degrees out from the wall.)

### Mounting instructions

The antenna should be mounted with the cable pointing downwards in order to allow for drainage through the hole located in that end of the antenna cover.

Mount the antenna with for the basis suitable screw that has a flat underside.

Note that the coaxial cable is sensitive to squeezing and sharp bends (min bending radius R 10).